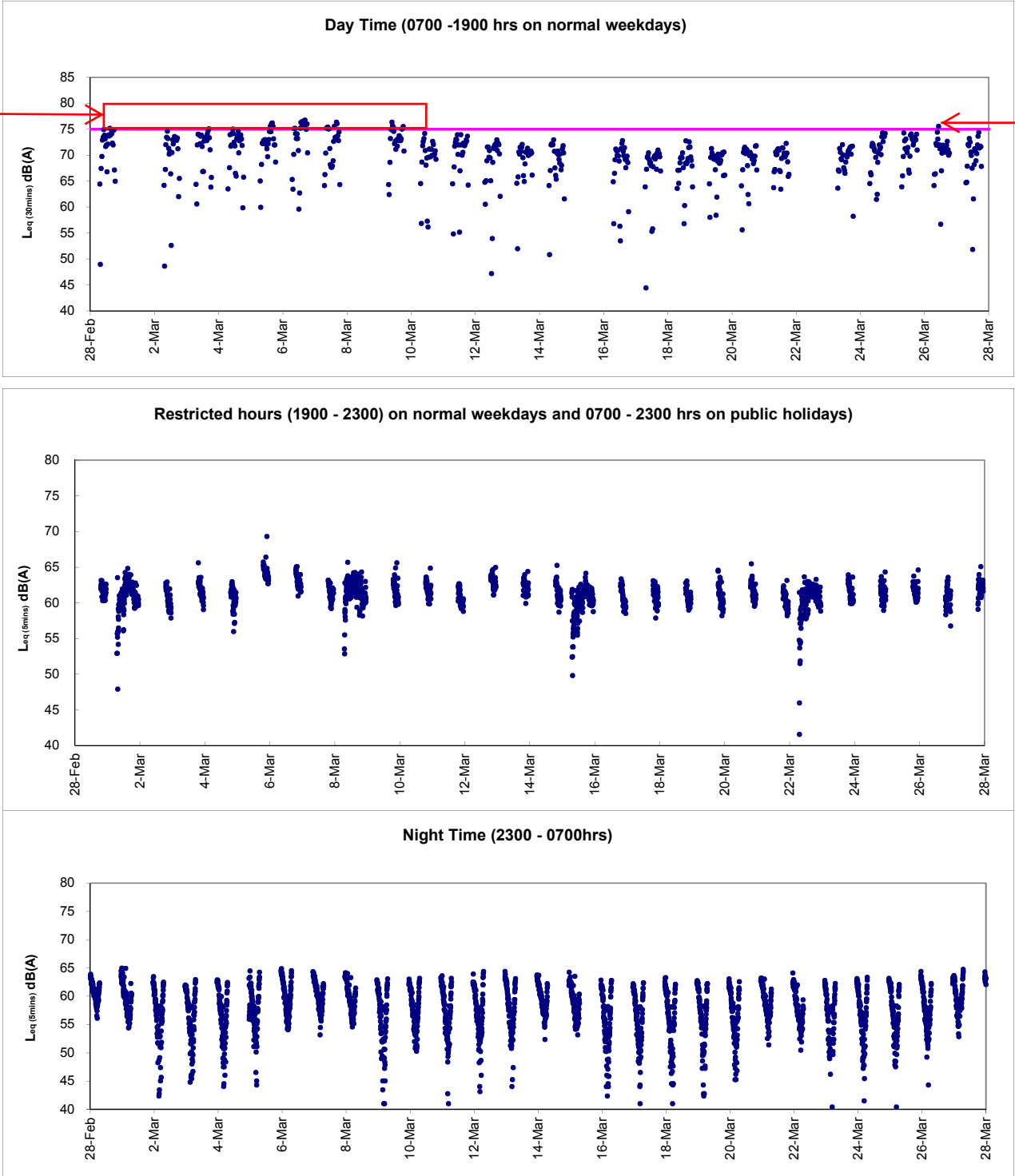




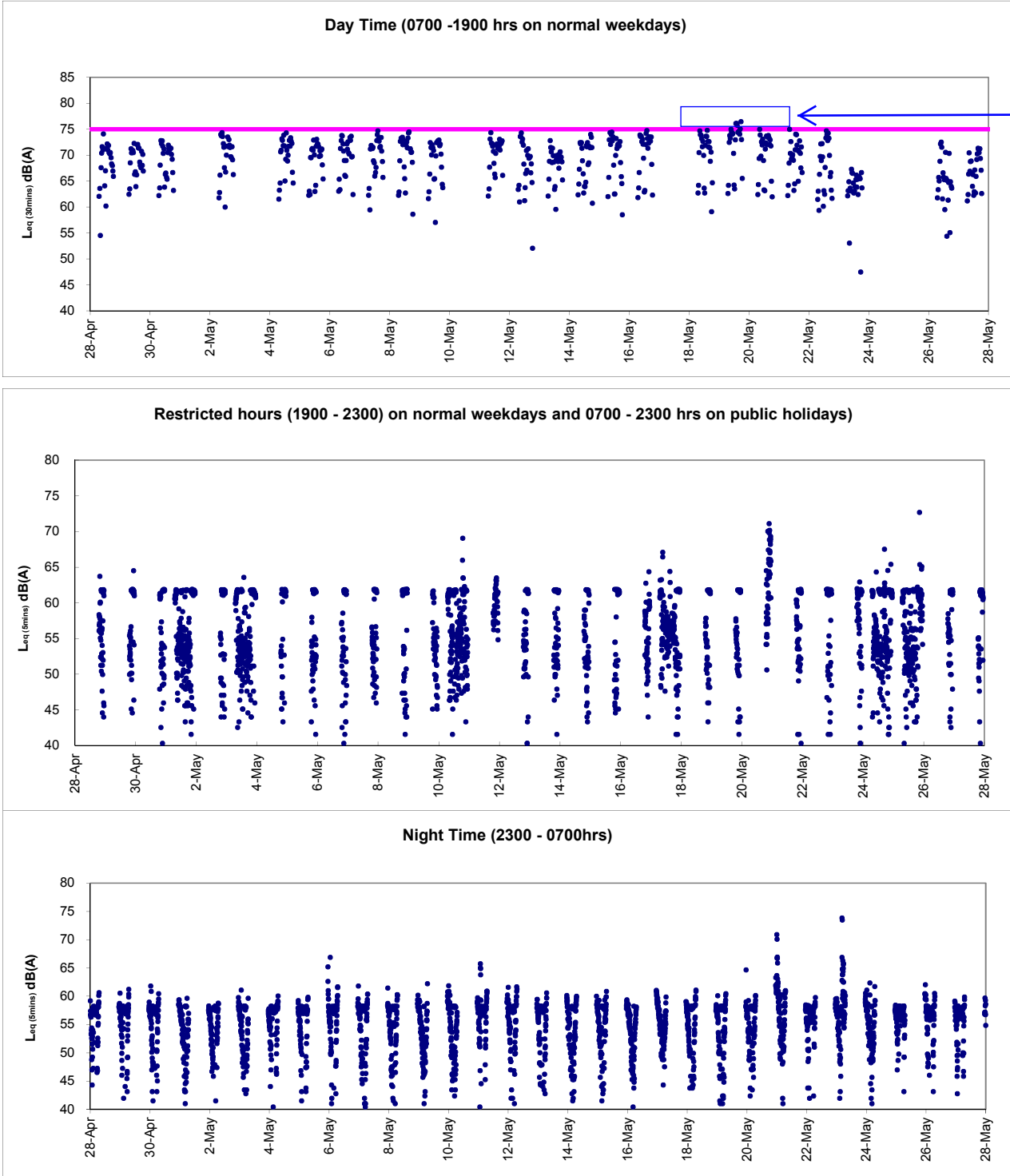
Graphic Presentation of Real Time Noise Monitoring Result (RTN2a- Hong Kong Electric Centre)



After checking with Contractor HY/2009/19, trench excavation and sheet piling works were undertaken at the concerned location during the recorded period and noise mitigation measures including erection of noise blanket was implemented by the Contractor. Meanwhile, breaking works and excavation works was observed at the non-CWB Project construction site next to the monitoring station across March 2015 and considered as the major noise contribution and as such, the exceedances were considered to be non Project related and contributed by nearby non-CWB Project construction works.



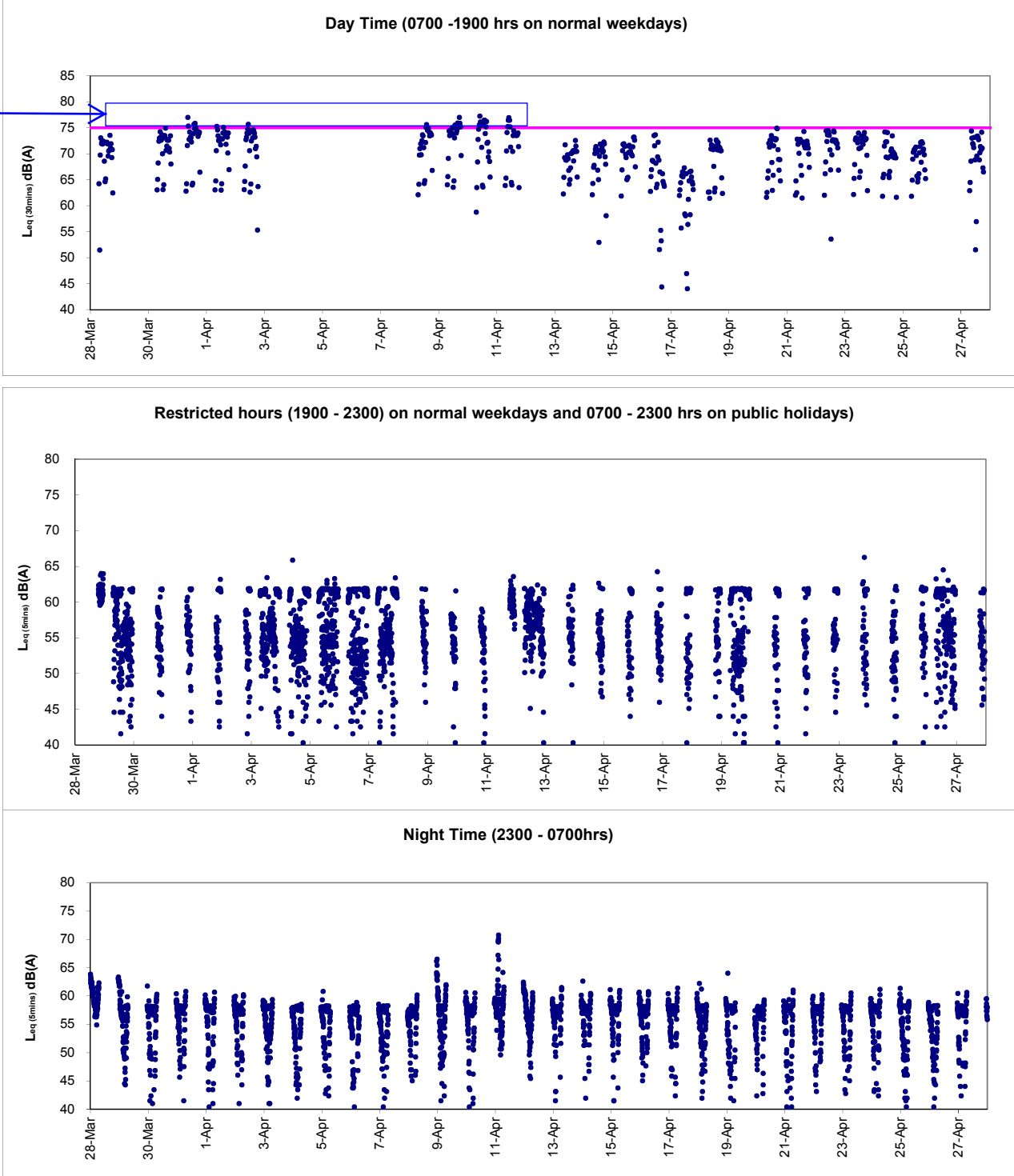
Graphic Presentation of Real Time Noise Monitoring Result (RTN2a- Hong Kong Electric Centre)



After checking with Contractor of HY/2009/19, U beam lifting works with trailer trucks and crawler crane was conducted on 19 May 2015 and Noise mitigation measures including erection of noise blanket was implemented by the Contractor while breaking works and excavation works was noted on-going at the construction site located next to the monitoring station. In view of the above, the exceedances were considered to be non-Project related and contributed by nearby non-CWB construction site works.



Graphic Presentation of Real Time Noise Monitoring Result (RTN2a- Hong Kong Electric Centre)



After checking with Contractor of HY/2009/19, sheet-pile driving works were conducted on 31 March 2015 and 2 April 2015 while sheet-pile extraction works were conducted on 8, 9, 10 and 11 April 2015. Noise mitigation measures including erection of noise blanket was implemented by the Contractor while breaking works and excavation works were observed across the concerned period at the construction site located next to the monitoring station. In view of the above, the exceedances were considered to be non-Project related and contributed by nearby non-CWB construction site works..